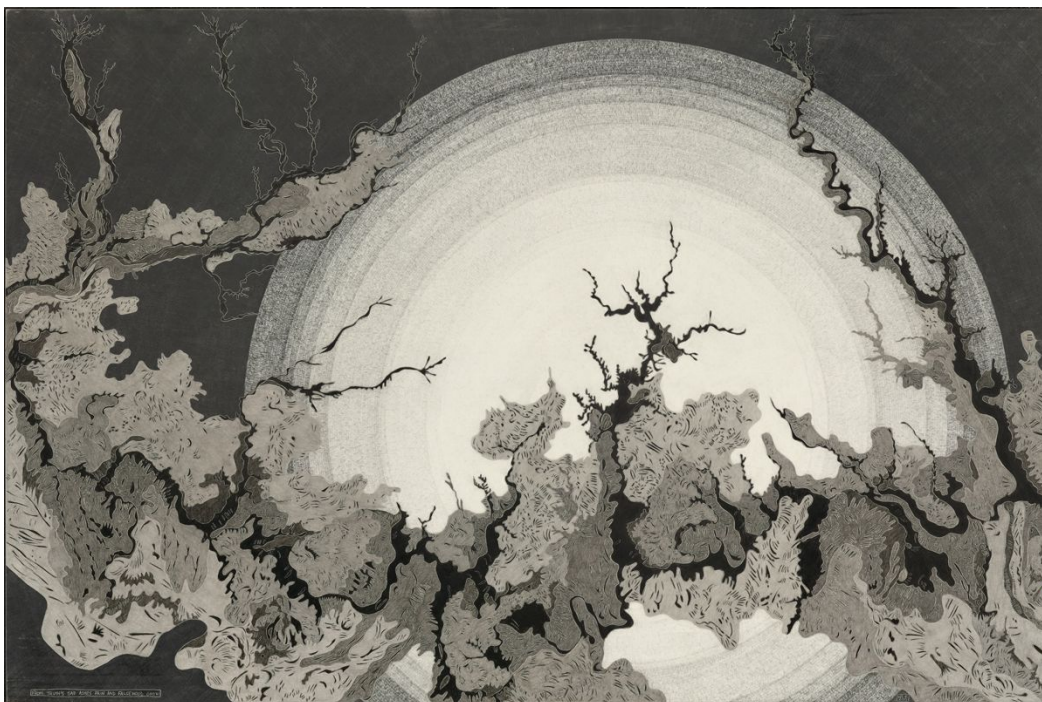


FOR IMMEDIATE RELEASE

QUALIA

Graphite Artist Christine Weir Debuts Two Years of Her Most Personal Work to Date at Launch Gallery LA



OPENING RECEPTION

**Saturday, May 20, 2017
6-9pm**

RSVP to: rsvp@launchla.org

EXHIBITION RUNS

May 20 - June 17, 2017

LAUNCH LA

**170 S. La Brea Ave, Los Angeles, CA
www.launchla.org**

March 27, 2017 | Los Angeles, CA – Launch LA is excited to announce its upcoming exhibition with local artist Christine Weir. *Qualia* is a survey of Weir's latest body of work that explores the emotional complexities of contemporary life. In this series, she meticulously and earnestly chronicles the internal response to chaos brought upon us through outside circumstances.



INFO@HIJINXARTS.COM
323.204.7246 | THINKHIJINX.COM

FOR IMMEDIATE RELEASE

Her most personal body of work to date, Weir uses drawing to take control and have power over this chaos. Each piece is an intricately detailed work of graphite on clay panel with flowing forms reminiscent of flowing rivers. The stark contrast and subtle details builds tension through shadows of light and dark and countless hours spent softly layering different weights of graphite. Each mark, location, and shape holds a different meaning for each onlooker, strenuously leading us across the panel through riverlike and mountainous forms.

Glowing, circular forms give us consistency and space to reconnect with our singular selves. These are a break from the tumultuous and controlled pandemonium that encompasses us on a daily basis through all-consuming commitments – relationships or otherwise. Weir's forms draw from physical and emotional scars etched onto the landscapes of our lives and the geography that we inhabit. By chronicling this trauma in black and white, Weir's pieces become objective windows through which we can continue to examine the anxieties and emotions of our lives.

Qualia will be on view at Launch LA from May 20 - June 17, 2017 with a public opening reception Saturday, May 20 from 6-9pm. To attend the opening reception, kindly RSVP to: rsvp@launchla.org

About Christine Weir

After graduating with a BFA in fine arts and drawing from the University of Kutztown, Christine Weir moved to New York City to pursue an MS in Art History at Pratt Institute. She began working as an art appraiser at an auction house in Los Angeles where she experienced a constant influx of artworks, handling thousands of pieces a year. Her interactions with the pieces began to inspire her, paying close attention to alternative techniques and processes while becoming more in tune with what made successful compositions and how she related to the creative process.

IG: @christineweirart | @launch_la

Media Inquiries: Hijinx Artist Management & PR | Heidi Johnson | heidi@thinkhijinx.com | 323.204.7246